

WAREHOUSE SUBLEASE

INDUSTRIAL



1401 E 18TH ST.

CLEVELAND, OH 44114

Prime central business district warehouse location in immaculate clean condition ready for immediate occupancy.

PROPERTY FEATURES:

- 48,000 total SF; 13,338 SF air conditioned space
- 25' x 27' column spacing
- 14' clearance
- 3 drive-in doors
- 3 docks; 2 with levelers and dock locks
- Kitchen
- 4-6 private offices
- Large parking field
- Occupancy – immediate; sublease through June 2022

Lease Rate: \$3.50 Gross + Utilities

FOR MORE INFORMATION CONTACT:

ADAM GIMBEL

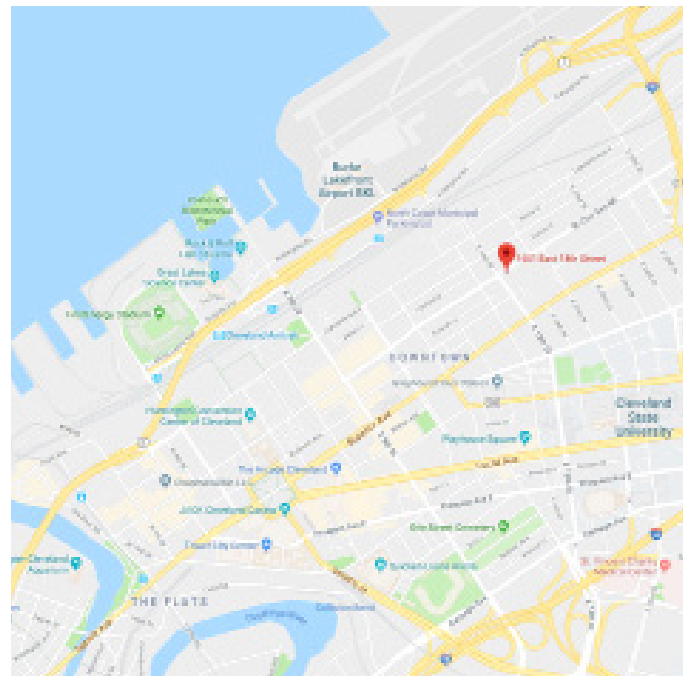
216.965.0616

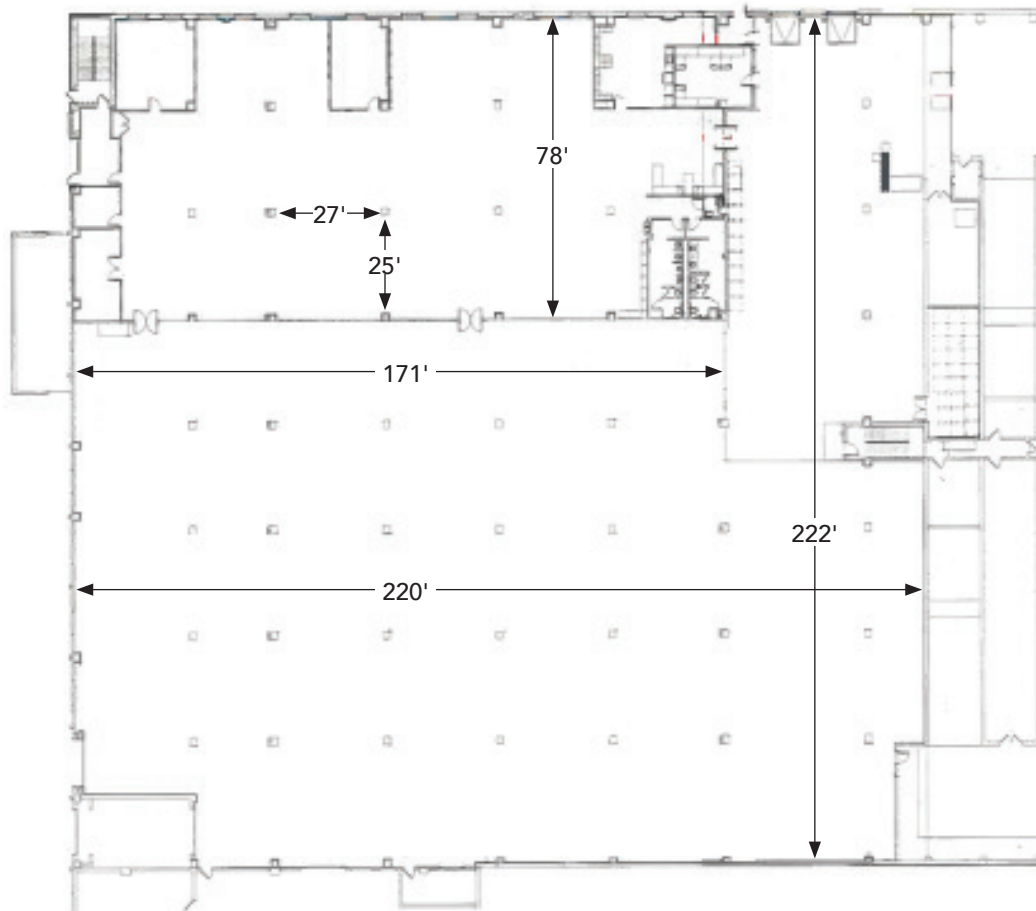
agimbel@allegrorealty.com

1938 Euclid Avenue, Suite 200

Cleveland, Ohio 44115

allegrorealty.com | 216-965-0630





FOR MORE INFORMATION CONTACT:

ADAM GIMBEL

216.965.0616

agimbel@allegrorealty.com

1938 Euclid Avenue, Suite 200

Cleveland, Ohio 44115

allegrorealty.com | 216-965-0630